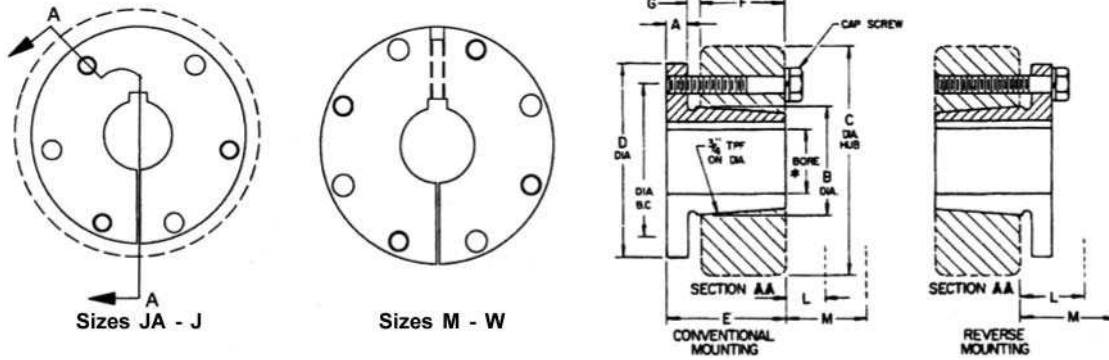


Inch QD Bushings



QD BUSHING RATINGS AND DIMENSIONS

Type	Ratings (Lb-in) Bush. Torque Cap.*	Bore Range				Dimensions							
		Min.	Max. Bore for:			A	B Dia.	C Hub Dia.		D Dia.	E	F	G
			Full KW	Shallow KW	No KW			Cl 30 Iron	Steel				
JA	1,000	1/2	1	1-3/16	1-1/4	0.31	1.38	3.93	2.25	2.00	1.00	0.56	0.12
SH	3,500	1/2	1-3/8	1-5/8	1-11/16	0.43	1.88	4.75	3.00	2.63	1.31	0.81	0.12
SDS	5,000	1/2	1-5/8	1-15/16	2	0.43	2.18	4.75	3.50	3.18	1.31	0.75	0.12
SD	5,000	1/2	1-5/8	1-15/16	2	0.43	2.18	3.81	3.50	3.18	1.81	1.25	0.12
SK	7,000	1/2	2-1/8	2-1/2	2-5/8	0.56	2.81	4.75	4.50	3.88	1.93	1.25	0.22
SF	11,000	1/2	2-5/16	2-15/16		0.63	3.13	6.38	5.50	4.63	2.06	1.25	0.22
E	20,000	7/8	2-7/8	3-1/2		0.88	3.83	7.50	6.50	6.00	2.75	1.63	0.25
F	30,000	1	3-1/4	3-15/16	4	1.00	4.43	7.75	7.25	6.63	3.75	2.50	0.34
J	45,000	1-1/2	3-3/4	4-1/2		1.13	5.14	9.00	8.00	7.25	4.63	3.18	0.38
M	85,000	2	4-3/4	5-1/2		1.25	6.50	11.38	10.00	9.00	6.75	5.18	0.41
N	150,000	2-7/16	5	6		1.50	7.00	12.00		10.00	8.12	6.25	0.56
P	250,000	2-15/16	5-15/16	7		1.75	8.25	14.00		11.75	9.38	7.25	0.63
W	375,000	4	7-1/2	8-1/2		2.00	10.42	17.00		15.00	11.38	9.00	0.50

*Torque ratings apply when bushing installation screws are tightened to listed torque. Important: Do not over-torque screws. This can lead to hub damage.

INSTALLATION INFORMATION

Type	Installation Screws				Required Wrench Clearance							
					Conventional Mounting				Reverse Mounting			
	B. C. Dia.	Qty.	Size	Screw Torque*	L-Install		M-Remove		L-Install		M-Remove	
					#	@	#	@	#	@	#	@
JA	1.65	3	10-24 x 1	54	0.41	2.53	1.13	3.25	1.13	3.25	1.56	3.68
SH	2.25	3	1/4 x 1-3/8	108	0.59	2.66	1.56	3.63	1.56	3.63	2.13	4.18
SDS	2.69	3	1/4 x 1-3/8	108	0.59	2.66	1.56	3.63	1.56	3.63	2.13	4.18
SD	2.69	3	1/4 x 1-7/8	108	0.66	2.72	2.06	4.13	2.06	4.13	2.63	4.68
SK	3.31	3	5/16 x 2	180	0.78	2.72	2.25	4.25	2.31	4.31	2.38	5.00
SF	3.88	3	3/8 x 2	360	0.91	2.91	2.38	4.36	2.43	4.43	3.32	5.31
E	5.00	3	1/2 x 2-3/4	720	1.25	3.19	3.13	5.06	3.18	5.13	4.43	6.38
F	5.63	3	9/16 x 3-5/8	900	1.28	3.10	4.13	5.94	4.18	6.00	5.50	7.31
J	6.25	3	5/8 x 4-1/2	1,620	1.41	3.22	4.94	6.75	3.93	5.75	5.50	7.31
M	7.88	4	3/4 x 6-3/4	2,700	2.16	4.03	7.69	9.56				
N	8.50	4	7/8 x 8	3,600	2.28		9.25					
P	10.00	4	1 x 9-1/2	5,400	3.13		10.88					
W	12.75	4	1-1/8 x 11-1/2	7,200	3.88		13.38					

Using Open-End Wrench @ Using Socket Wrench
* Lb - in



Inch QD Bushings

Type/ Avg. Wt.	Bore ◆	Part Number	Bushing Keyway	Shaft Keyseat (Ref.)
JA .4 Lbs.	3/8	JA.3/8	None	None
	7/16	JA.7/16		
	1/2	JA.1/2	1/8 x 1/16	1/8 x 1/16
	9/16	JA.9/16		
	5/8	JA.5/8	3/16 x 3/32	3/16 x 3/32
	11/16	JA.11/16		
	3/4	JA.3/4		
	13/16	JA.13/16		
	7/8	JA.7/8		
	15/16	JA.15/16	1/4 x 1/8	1/4 x 1/8
1	JA.1			
1-1/16	JA.1-1/16	1/4 x 1/16▲	1/4 x 1/8	
1-1/8	JA.1-1/8			
1-3/16	JA.1-3/16			
1-1/4	JA.1-1/4	None	None	
SH .9 Lbs.	1/2	SH.1/2	1/8 x 1/16	1/8 x 1/16
	9/16	SH.9/16		
	5/8	SH.5/8	3/16 x 3/32	3/16 x 3/32
	11/16	SH.11/16		
	3/4	SH.3/4		
	13/16	SH.13/16		
	7/8	SH.7/8		
	15/16	SH.15/16	1/4 x 1/8	1/4 x 1/8
	1	SH.1		
	1-1/16	SH.1-1/16		
	1-1/8	SH.1-1/8		
	1-3/16	SH.1-3/16		
	1-1/4	SH.1-1/4		
	1-5/16	SH.1-5/16	5/16 x 5/32	5/16 x 5/32
1-3/8	SH.1-3/8			
1-7/16	SH.1-7/16	3/8 x 1/16▲	3/8 x 3/16	
1-1/2	SH.1-1/2			
1-9/16	SH.1-9/16			
1-5/8	SH.1-5/8			
1-11/16	SH.1-11/16	None	None	
SDS 1.3 Lbs.	1/2	SDS.1/2	1/8 x 1/16	1/8 x 1/16
	9/16	SDS.9/16		
	5/8	SDS.5/8	3/16 x 3/32	3/16 x 3/32
	11/16	SDS.11/16		
	3/4	SDS.3/4		
	13/16	SDS.13/16		
	7/8	SDS.7/8		
	15/16	SDS.15/16	1/4 x 1/8	1/4 x 1/8
	1	SDS.1		
	1-1/16	SDS.1-1/16		
	1-1/8	SDS.1-1/8		
	1-3/16	SDS.1-3/16		
	1-1/4	SDS.1-1/4		
	1-5/16	SDS.1-5/16	5/16 x 5/32	5/16 x 5/32
	1-3/8	SDS.1-3/8		
	1-7/16	SDS.1-7/16	3/8 x 3/16	3/8 x 3/16
	1-1/2	SDS.1-1/2		
	1-9/16	SDS.1-9/16		
1-5/8	SDS.1-5/8			
1-11/16	SDS.1-11/16			
1-3/4	SDS.1-3/4	3/8 x 1/8▲	3/8 x 3/16	

Type/ Avg. Wt.	Bore ◆	Part Number	Bushing Keyway	Shaft Keyseat (Ref.)
SDS 1.3 Lbs.	1-13/16	SDS.1-13/16	1/2 x 1/16▲	1/2 x 1/4
	1-7/8	SDS.1-7/8		
	1-15/16	SDS.1-15/16	None	None
SD 1.6 Lbs.	1/2	SD.1/2	1/8 x 1/16	1/8 x 1/16
	9/16	SD.9/16		
	5/8	SD.5/8	3/16 x 3/32	3/16 x 3/32
	11/16	SD.11/16		
	3/4	SD.3/4		
	13/16	SD.13/16		
	7/8	SD.7/8		
	15/16	SD.15/16	1/4 x 1/8	1/4 x 1/8
	1	SD.1		
	1-1/16	SD.1-1/16		
	1-1/8	SD.1-1/8		
	1-3/16	SD.1-3/16		
	1-1/4	SD.1-1/4		
	1-5/16	SD.1-5/16	5/16 x 5/32	5/16 x 5/32
1-3/8	SD.1-3/8			
1-7/16	SD.1-7/16	3/8 x 3/16	3/8 x 3/16	
1-1/2	SD.1-1/2			
1-9/16	SD.1-9/16			
1-5/8	SD.1-5/8			
1-11/16	SD.1-11/16			
1-3/4	SD.1-3/4	3/8 x 1/8▲	3/8 x 3/16	
1-13/16	SD.1-13/16	1/2 x 1/16▲	1/2 x 1/4	
1-7/8	SD.1-7/8			
1-15/16	SD.1-15/16	None	None	
2	SD.2			
SK 2.7 Lbs.	1/2	SK.1/2	1/8 x 1/16	1/8 x 1/16
	9/16	SK.9/16		
	5/8	SK.5/8	3/16 x 3/32	3/16 x 3/32
	11/16	SK.11/16		
	3/4	SK.3/4		
	13/16	SK.13/16		
	7/8	SK.7/8		
	15/16	SK.15/16	1/4 x 1/8	1/4 x 1/8
	1	SK.1		
	1-1/16	SK.1-1/16		
	1-1/8	SK.1-1/8		
	1-3/16	SK.1-3/16		
	1-1/4	SK.1-1/4		
	1-5/16	SK.1-5/16	5/16 x 5/32	5/16 x 5/32
1-3/8	SK.1-3/8			
1-7/16	SK.1-7/16	3/8 x 3/16	3/8 x 3/16	
1-1/2	SK.1-1/2			
1-9/16	SK.1-9/16			
1-5/8	SK.1-5/8			
1-11/16	SK.1-11/16			
1-3/4	SK.1-3/4			
1-13/16	SK.1-13/16	1/2 x 1/4	1/2 x 1/4	
1-7/8	SK.1-7/8			
1-15/16	SK.1-15/16			

- ▲ Key furnished for these sizes only
- ◆ Bores not listed will be priced on application
- Ductile Iron

Ordering Examples:
JA.1-1/16 SH.1-1/16

SDS.1-1/16

SD.1-1/16

SK.1-1/16

www.hxsprockets.com



Inch QD Bushings

Type/ Avg. Wt.	Bore ◆	Part Number	Bushing Keyway	Shaft Keyseat (Ref.)
SK 2.7 Lbs.	2	SK.2		
	2-1/16	SK.2-1/16	1/2 x 1/4	1/2 x 1/4
	2-1/8	SK.2-1/8		
	2-3/16	SK.2-3/16	1/2 x 3/16▲	1/2 x 1/4
	2-1/4	SK.2-1/4		
	2-5/16	SK.2-5/16		
	2-3/8	SK.2-3/8	5/8 x 1/16▲	5/8 x 5/16
	2-7/16	SK.2-7/16		
	2-1/2	SK.2-1/2		
	2-9/16	SK.2-9/16	None	None
	2-5/8	SK.2-5/8		
SF 3.8 Lbs.	1/2	SF.1/2	1/8 x 1/16	1/8 x 1/16
	9/16	SF.9/16		
	5/8	SF.5/8		
	11/16	SF.11/16		
	3/4	SF.3/4	3/16 x 3/32	3/16 x 3/32
	13/16	SF.13/16		
	7/8	SF.7/8		
	15/16	SF.15/16		
	1	SF.1		
	1-1/16	SF.1-1/16	1/4 x 1/8	1/4 x 1/8
	1-1/8	SF.1-1/8		
	1-3/16	SF.1-3/16		
	1-1/4	SF.1-1/4		
	1-5/16	SF.1-5/16	5/16 x 5/32	5/16 x 5/32
	1-3/8	SF.1-3/8		
	1-7/16	SF.1-7/16		
	1-1/2	SF.1-1/2		
	1-9/16	SF.1-9/16	3/8 x 3/16	3/8 x 3/16
	1-5/8	SF.1-5/8		
	1-11/16	SF.1-11/16		
	1-3/4	SF.1-3/4		
	1-13/16	SF.1-13/16		
	1-7/8	SF.1-7/8		
	1-15/16	SF.1-15/16		
	2	SF.2	1/2 x 1/4	1/2 x 1/4
	2-1/16	SF.2-1/16		
	2-1/8	SF.2-1/8		
	2-3/16	SF.2-3/16		
	2-1/4	SF.2-1/4		
	2-5/16	SF.2-5/16	5/8 x 5/16	5/8 x 5/16
2-3/8	SF.2-3/8			
2-7/16	SF.2-7/16	5/8 x 3/16▲	5/8 x 5/16	
2-1/2	SF.2-1/2			
2-9/16	SF.2-9/16			
2-5/8	SF.2-5/8	5/8 x 1/16▲	5/8 x 5/16	
2-11/16	SF.2-11/16			
2-3/4	SF.2-3/4			
2-13/16	SF.2-13/16	3/4 x 1/16▲	3/4 x 3/8	
2-7/8	SF.2-7/8	3/4 x 1/32▲	3/4 x 3/8	
2-15/16	SF.2-15/16			
E	7/8	E.7/8	3/16 x 3/32	3/16 x 3/32
	15/16	E.15/16		
9 Lbs.	1	E.1	1/4 x 1/8	1/4 x 1/8
	1-1/16	E.1-1/16		
	1-1/8	E.1-1/8		

Type/ Avg. Wt.	Bore ◆	Part Number	Bushing Keyway	Shaft Keyseat (Ref.)
E 9 Lbs.	1-3/16	E.1-3/16	1/4 x 1/8	1/4 x 1/8
	1-1/4	E.1-1/4		
	1-5/16	E.1-5/16	5/16 x 5/32	5/16 x 5/32
	1-3/8	E.1-3/8		
	1-7/16	E.1-7/16		
	1-1/2	E.1-1/2		
	1-9/16	E.1-9/16	3/8 x 3/16	3/8 x 3/16
	1-5/8	E.1-5/8		
	1-11/16	E.1-11/16		
	1-3/4	E.1-3/4		
	1-13/16	E.1-13/16		
	1-7/8	E.1-7/8		
	1-15/16	E.1-15/16		
	2	E.2	1/2 x 1/4	1/2 x 1/4
	2-1/16	E.2-1/16		
	2-1/8	E.2-1/8		
	2-3/16	E.2-3/16		
	2-1/4	E.2-1/4		
	2-5/16	E.2-5/16		
	2-3/8	E.2-3/8		
	2-7/16	E.2-7/16		
	2-1/2	E.2-1/2	5/8 x 5/16	5/8 x 5/16
	2-9/16	E.2-9/16		
	2-5/8	E.2-5/8		
	2-11/16	E.2-11/16		
	2-3/4	E.2-3/4		
	2-13/16	E.2-13/16	3/4 x 3/8	3/4 x 3/8
	2-7/8	E.2-7/8		
	2-15/16	E.2-15/16		
	3	E.3	3/4 x 1/8▲	3/4 x 3/8
3-1/16	E.3-1/16			
3-1/8	E.3-1/8			
3-3/16	E.3-3/16	3/4 x 1/8▲	3/4 x 1/8	
3-1/4	E.3-1/4			
3-5/16	E.3-5/16	7/8 x 1/8▲	7/8 x 7/16	
3-3/8	E.3-3/8			
3-7/16	E.3-7/16	7/8 x 1/16▲	7/8 x 7/16	
3-1/2	E.3-1/2			
F 14 Lbs.	1	F.1		
	1-1/16	F.1-1/16		
	1-1/8	F.1-1/8	1/4 x 1/8	1/4 x 1/8
	1-3/16	F.1-3/16		
	1-1/4	F.1-1/4		
	1-5/16	F.1-5/16	5/16 x 5/32	5/16 x 5/32
	1-3/8	F.1-3/8		
	1-7/16	F.1-7/16		
	1-1/2	F.1-1/2		
	1-9/16	F.1-9/16	3/8 x 3/16	3/8 x 3/16
	1-5/8	F.1-5/8		
	1-11/16	F.1-11/16		
	1-3/4	F.1-3/4		
	1-13/16	F.1-13/16	1/2 x 1/4	1/2 x 1/4
1-7/8	F.1-7/8			

- ▲ Key furnished for these sizes only
- ◆ Bores not listed will be priced on application
- Ductile Iron

Ordering Examples:

SK.1-1/16

SF.1-1/16

E.1-1/16

F.1-1/16

Inch QD Bushings

Type/ Avg. Wt.	Bore ◆	Part Number	Bushing Keyway	Shaft Keyseat (Ref.)
F 14 Lbs.	1-15/16	F.1-15/16	1/2 x 1/4	1/2 x 1/4
	2	F.2		
	2-1/16	F.2-1/16		
	2-1/8	F.2-1/8		
	2-3/16	F.2-3/16		
	2-1/4	F.2-1/4		
	2-5/16	F.2-5/16	5/8 x 5/16	5/8 x 5/16
	2-3/8	F.2-3/8		
	2-7/16	F.2-7/16		
	2-1/2	F.2-1/2		
	2-9/16	F.2-9/16		
	2-5/8	F.2-5/8		
	2-11/16	F.2-11/16	3/4 x 3/8	3/4 x 3/8
	2-3/4	F.2-3/4		
	2-13/16	F.2-13/16		
	2-7/8	F.2-7/8		
	2-15/16	F.2-15/16		
	3	F.3		
	3-1/16	F.3-1/16	7/8 x 3/16▲	7/8 x 7/16
	3-1/8	F.3-1/8		
3-3/16	F.3-3/16			
3-1/4	F.3-1/4			
3-5/16	F.3-5/16			
3-3/8	F.3-3/8			
3-7/16	F.3-7/16	1 x 1/8▲	1 x 1/2	
3-1/2	F.3-1/2			
3-9/16	F.3-9/16			
3-5/8	F.3-5/8			
3-11/16	F.3-11/16			
3-3/4	F.3-3/4			
3-13/16	F.3-13/16	None	None	
3-7/8	F.3-7/8			
3-15/16	F.3-15/16			
4	F.4			
J 21 Lbs.	1-1/4	J.1-1/4	1/4 x 1/8	1/4 x 1/8
	1-5/16	J.1-5/16	5/16 x 5/32	5/16 x 5/32
	1-3/8	J.1-3/8		
	1-7/16	J.1-7/16		
	1-1/2	J.1-1/2	3/8 x 3/16	3/8 x 3/16
	1-9/16	J.1-9/16		
	1-5/8	J.1-5/8		
	1-11/16	J.1-11/16		
	1-3/4	J.1-3/4		
	1-13/16	J.1-13/16		
	1-7/8	J.1-7/8		
	1-15/16	J.1-15/16		
	2	J.2		
	2-1/16	J.2-1/16		
	2-1/8	J.2-1/8		
	2-3/16	J.2-3/16	5/8 x 5/16	5/8 x 5/16
	2-1/4	J.2-1/4		
	2-5/16	J.2-5/16		
2-3/8	J.2-3/8			
2-7/16	J.2-7/16			
2-1/2	J.2-1/2			
2-9/16	J.2-9/16			

Type/ Avg. Wt.	Bore ◆	Part Number	Bushing Keyway	Shaft Keyseat (Ref.)	
J 21 Lbs.	2-5/8	J.2-5/8	5/8 x 5/16	5/8 x 5/16	
	2-11/16	J.2-11/16			
	2-3/4	J.2-3/4			
	2-13/16	J.2-13/16	3/4 x 3/8	3/4 x 3/8	
	2-7/8	J.2-7/8			
	2-15/16	J.2-15/16			
	3	J.3			
	3-1/16	J.3-1/16			
	3-1/8	J.3-1/8			
	3-3/16	J.3-3/16	7/8 x 7/16	7/8 x 7/16	
	3-1/4	J.3-1/4			
	3-5/16	J.3-5/16			
	3-3/8	J.3-3/8			
	3-7/16	J.3-7/16			
	3-1/2	J.3-1/2			
	3-9/16	J.3-9/16	1 x 1/8▲	1 x 1/2	
	3-5/8	J.3-5/8			
	3-11/16	J.3-11/16			
	3-3/4	J.3-3/4			
	3-13/16	J.3-13/16			
3-7/8	J.3-7/8				
3-15/16	J.3-15/16	1 x 1/8▲	1 x 1/2		
4	J.4				
4-1/16	J.4-1/16				
4-1/8	J.4-1/8				
4-3/16	J.4-3/16				
4-1/4	J.4-1/4				
4-5/16	J.4-5/16	1/2 x 1/4	1/2 x 1/4		
4-3/8	J.4-3/8				
4-7/16	J.4-7/16				
4-1/2	J.4-1/2				
2	M.2			1/2 x 1/4	1/2 x 1/4
2-1/16	M.2-1/16				
2-1/8	M.2-1/8				
2-3/16	M.2-3/16				
2-1/4	M.2-1/4	5/8 x 5/16	5/8 x 5/16		
2-5/16	M.2-5/16				
2-3/8	M.2-3/8				
2-7/16	M.2-7/16				
2-1/2	M.2-1/2				
2-9/16	M.2-9/16				
2-5/8	M.2-5/8	3/4 x 3/8	3/4 x 3/8		
2-11/16	M.2-11/16				
2-3/4	M.2-3/4				
2-13/16	M.2-13/16				
2-7/8	M.2-7/8				
2-15/16	M.2-15/16				
3	M.3	7/8 x 7/16	7/8 x 7/16		
3-1/16	M.3-1/16				
3-1/8	M.3-1/8				
3-3/16	M.3-3/16				
3-1/4	M.3-1/4				
3-5/16	M.3-5/16				

- ▲ Key furnished for these sizes only
- ◆ Bores not listed will be priced on application
- Ductile Iron

Ordering Examples:

F.1-1/16

J.2-1/16

M.2-1/16

Inch QD Bushings

Type/ Avg. Wt.	Bore ◆	Part Number	Bushing Keyway	Shaft Keyseat (Ref.)
M 46 Lbs.	3-3/8	M.3-3/8	7/8 x 7/16	7/8 x 7/16
	3-7/16	M.3-7/16		
	3-1/2	M.3-1/2		
	3-9/16	M.3-9/16		
	3-5/8	M.3-5/8		
	3-11/16	M.3-11/16		
	3-3/4	M.3-3/4	1 x 1/2	1 x 1/2
	3-13/16	M.3-13/16		
	3-7/8	M.3-7/8		
	3-15/16	M.3-15/16		
	4	M.4		
	4-1/16	M.4-1/16		
	4-1/8	M.4-1/8		
	4-3/16	M.4-3/16		
	4-1/4	M.4-1/4		
	4-5/16	M.4-5/16		
	4-3/8	M.4-3/8		
	4-7/16	M.4-7/16		
	4-1/2	M.4-1/2	1-1/4 x 5/8	1-1/4 x 5/8
	4-9/16	M.4-9/16		
4-5/8	M.4-5/8			
4-11/16	M.4-11/16			
4-3/4	M.4-3/4			
4-13/16	M.4-13/16			
4-7/8	M.4-7/8	1-1/4 x 1/4▲	1-1/4 x 5/8	
4-15/16	M.4-15/16			
5	M.5			
5-1/16	M.5-1/16			
5-1/8	M.5-1/8			
5-3/16	M.5-3/16			
5-1/4	M.5-1/4			
5-5/16	M.5-5/16			
5-3/8	M.5-3/8			
5-7/16	M.5-7/16			
5-1/2	M.5-1/2			
N 70 Lbs.	2-7/16	N.2-7/16	5/8 x 5/16	5/8 x 5/16
	2-1/2	N.2-1/2		
	2-9/16	N.2-9/16		
	2-5/8	N.2-5/8		
	2-11/16	N.2-11/16		
	2-3/4	N.2-3/4	3/4 x 3/8	3/4 x 3/8
	2-13/16	N.2-13/16		
	2-7/8	N.2-7/8		
	2-15/16	N.2-15/16		
	3	N.3		
	3-1/16	N.3-1/16		
	3-1/8	N.3-1/8		
	3-3/16	N.3-3/16		
	3-1/4	N.3-1/4	7/8 x 7/16	7/8 x 7/16
	3-5/16	N.3-5/16		
	3-3/8	N.3-3/8		
3-7/16	N.3-7/16			
3-1/2	N.3-1/2			
3-9/16	N.3-9/16			
3-5/8	N.3-5/8			
3-11/16	N.3-11/16			

Type/ Avg. Wt.	Bore ◆	Part Number	Bushing Keyway	Shaft Keyseat (Ref.)
N 70 Lbs.	3-3/4	N.3-3/4	7/8 x 7/16	7/8 x 7/16
	3-13/16	N.3-13/16	1 x 1/2	1 x 1/2
	3-7/8	N.3-7/8		
	3-15/16	N.3-15/16		
	4	N.4		
	4-1/16	N.4-1/16		
	4-1/8	N.4-1/8		
	4-3/16	N.4-3/16		
	4-1/4	N.4-1/4		
	4-5/16	N.4-5/16		
	4-3/8	N.4-3/8		
	4-7/16	N.4-7/16		
	4-1/2	N.4-1/2	1-1/4 x 5/8	1-1/4 x 5/8
	4-9/16	N.4-9/16		
	4-5/8	N.4-5/8		
	4-11/16	N.4-11/16		
	4-3/4	N.4-3/4		
	4-13/16	N.4-13/16		
	4-7/8	N.4-7/8	1-1/4 x 1/4▲	1-1/4 x 5/8
	4-15/16	N.4-15/16		
5	N.5			
5-1/16	N.5-1/16			
5-1/8	N.5-1/8			
5-3/16	N.5-3/16			
5-1/4	N.5-1/4	1-1/2 x 1/4▲	1-1/2 x 3/4	
5-5/16	N.5-5/16			
5-3/8	N.5-3/8			
5-7/16	N.5-7/16			
5-1/2	N.5-1/2			
5-9/16	N.5-9/16			
5-5/8	N.5-5/8	1-1/2 x 1/8▲	1-2 x 3/4	
5-11/16	N.5-11/16			
5-3/4	N.5-3/4			
5-13/16	N.5-13/16			
5-7/8	N.5-7/8			
5-15/16	N.5-15/16			
6	N.6	3/4 x 3/8	3/4 x 3/8	
2-15/16	P.2-15/16			
3	P.3			
3-1/16	P.3-1/16			
3-1/8	P.3-1/8			
3-3/16	P.3-3/16			
3-1/4	P.3-1/4	7/8 x 7/16	7/8 x 7/16	
3-5/16	P.3-5/16			
3-3/8	P.3-3/8			
3-7/16	P.3-7/16			
3-1/2	P.3-1/2			
3-9/16	P.3-9/16			
3-5/8	P.3-5/8			
3-11/16	P.3-11/16			
3-3/4	P.3-3/4	1 x 1/2	1 x 1/2	
3-13/16	P.3-13/16			
3-7/8	P.3-7/8			

- ▲ Key furnished for these sizes only
- ◆ Bores not listed will be priced on application
- Ductile Iron

Ordering Examples:

M.2-1/16

N.2-15/16

P.2-15/16

Type/ Avg. Wt.	Bore ◆	Part Number	Bushing Keyway	Shaft Keyseat (Ref.)		
P 133 Lbs.	3-15/16 4	P.3-15/16 P.4	1 x 1/2	1 x 1/2		
	4-1/16 4-1/8	P.4-1/16 P.4-1/8				
	4-3/16 4-1/4	P.4-3/16 P.4-1/4				
	4-5/16 4-3/8	P.4-5/16 P.4-3/8				
	4-7/16 4-1/2	P.4-7/16 P.4-1/2				
	4-9/16 4-5/8	P.4-9/16 P.4-5/8			1-1/4 x 5/8	1-1/4 x 5/8
	4-11/16 4-3/4	P.4-11/16 P.4-3/4				
	4-13/16 4-7/8	P.4-13/16 P.4-7/8				
	4-15/16 5	P.4-15/16 P.5				
	5-1/16 5-1/8	P.5-1/16 P.5-1/8				
	5-3/16 5-1/4	P.5-3/16 P.5-1/4				
	5-5/16 5-3/8	P.5-5/16 P.5-3/8				
	5-7/16 5-1/2	P.5-7/16 P.5-1/2				
	5-9/16 5-5/8	P.5-9/16 P.5-5/8	1-1/2 x 3/4	1-1/2 x 3/4		
	5-11/16 5-3/4	P.5-11/16 P.5-3/4				
	5-13/16 5-7/8	P.5-13/16 P.5-7/8				
	5-15/16	P.5-15/16				
	6	P.6				
	6-1/16 6-1/8	P.6-1/16 P.6-1/8	1-1/2 x 1/4▲	1-1/2 x 1/4		
	6-3/16 6-1/4	P.6-3/16 P.6-1/4				
	6-5/16 6-3/8	P.6-5/16 P.6-3/8				
	6-7/16 6-1/2	P.6-7/16 P.6-1/2				
	6-9/16 6-5/8	P.6-9/16 P.6-5/8			1-3/4 x 1/8▲	1-3/4 x 3/4
	6-11/16 6-3/4	P.6-11/16 P.6-3/4				
	6-13/16 6-7/8	P.6-13/16 P.6-7/8				
	6-15/16	P.6-15/16				
	7	P.7				
	W 210 Lbs.	4	W.4	1 x 1/2	1 x 1/2	
		4-1/16 4-1/8	W.4-1/16 W.4-1/8			
		4-3/16 4-1/4	W.4-3/16 W.4-1/4			
		4-5/16 4-3/8	W.4-5/16 W.4-3/8			
		4-7/16 4-1/2	W.4-7/16 W.4-1/2			
		4-9/16	W.4-9/16			1-1/4 x 5/8

W 210 Lbs.	4-5/8 4-11/16	W.4-5/8 W.4-11/16	1-1/4 x 5/8	1-1/4 x 5/8
	4-3/4 4-13/16	W.4-3/4 W.4-13/16		
	4-7/8 4-15/16	W.4-7/8 W.4-15/16		
	5 5-1/16	W.5 W.5-1/16		
	5-1/8 5-3/16	W.5-1/8 W.5-3/16		
	5-1/4 5-5/16	W.5-1/4 W.5-5/16		
	5-3/8 5-7/16	W.5-3/8 W.5-7/16		
	5-1/2	W.5-1/2		
	5-9/16 5-5/8	W.5-9/16 W.5-5/8		
	5-11/16 5-3/4	W.5-11/16 W.5-3/4		
	5-13/16 5-7/8	W.5-13/16 W.5-7/8		
	5-15/16	W.5-15/16		
	6	W.6		
	6-1/16 6-1/8	W.6-1/16 W.6-1/8		
	6-3/16 6-1/4	W.6-3/16 W.6-1/4		
	6-5/16 6-3/8	W.6-5/16 W.6-3/8		
	6-7/16 6-1/2	W.6-7/16 W.6-1/2		
	6-9/16 6-5/8	W.6-9/16 W.6-5/8	1-3/4 X 3-4	1-3/4 X 3/4
	6-11/16 6-3/4	W.6-11/16 W.6-3/4		
	6-13/16 6-7/8	W.6-13/16 W.6-7/8		
	6-15/16	W.6-15/16		
	7	W.7		
	7-1/16 7-1/8	W.7-1/16 W.7-1/8		
	7-3/16 7-1/4	W.7-3/16 W.7-1/4		
	7-5/16 7-3/8	W.7-5/16 W.7-3/8		
	7-7/16 7-1/2	W.7-7/16 W.7-1/2	2 X 1/4▲	2 X 3/4
	7-9/16 7-5/8	W.7-9/16 W.7-5/8		
	7-11/16 7-3/4	W.7-11/16 W.7-3/4		
	7-13/16 7-7/8	W.7-13/16 W.7-7/8		
	7-15/16	W.7-15/16		
	8	W.8		
	8-1/16 8-1/8	W.8-1/16 W.8-1/8		
	8-3/16 8-1/4	W.8-3/16 W.8-1/4		
8-5/16 8-3/8	W.8-5/16 W.8-3/8			
8-7/16 8-1/2	W.8-7/16 W.8-1/2			

Metric QD Bushings

Bushing	Dimensions								Cap Screws Required	Cap Screws			Set Screw Size	Average Weight (Approx)
	A	B	D	E	F	G	L	Bolt Circle		Maximum				
										Min.	Standard Keyway	Shallow Keyway		
SH	7/15	1.871	2 11/15	7/8	13/16	3/16	1 15/16	2 1/4	3 1/4 x 1 3/8	1/2	1 3/8	1 11/16	1/4	1.00
SDS	1/2	2.187	3 3/16	7/8	3/4	3/16	1 3/8	2 11/16	3 1/4 x 1 3/8	1/2	1 11/16	2	1/4	1.00
SD	1/2	2.187	3 3/16	1 15/16	1 1/4	3/16	1 13/16	2 11/16	3 1/4 x 1 3/8	1/2	1 11/16	1 15/16	1/4	1.50
SK	9/16	2.812	3 7/8	1 3/8	1 1/4	3/16	1 15/16	3 5/16	3 15/16 x 2	1/2	2 1/8	2 1/2	5/16	2.00
SF	9/16	3.125	4 5/8	1 1/2	1 1/4	1/4	2 1/16	3 7/8	3 3/8 x 2	1/2	2 5/16	2 13/16	5/16	3.00
E	3/4	3.834	6	1 7/8	1 5/8	5/16	2 5/8	5	3 1/2 x 2 3/4	7/8	2 7/8	3 1/2	3/8	10.00
F	13/15	4.437	6 5/8	2 13/15	2 1/2	3/8	3 5/8	5 5/8	3 9/16 x 3/58	1	3 5/16	3 15/16	1/2	11.50
J	1	5.148	7 1/4	3 1/2	3 3/16	3/8	4 1/2	6 1/4	3 5/8 x 4 1/2	1 7/16	3 3/4	4 1/2	5/8	18.00

Millimeter Bore

Type	Bore	Part #	Keyway
SH	24	SH.24	8 x 3.3
	25	SH.25	8 x 3.3
	28	SH.28	8 x 3.3
	30	SH.30	8 x 3.3
	32	SH.32	10 x 3.3
	35	SH.35	10 x 3.3
SDS	24	SDS.24	8 x 3.3
	25	SDS.25	8 x 3.3
	28	SDS.28	8 x 3.3
	30	SDS.30	8 x 3.3
	32	SDS.32	10 x 3.3
	35	SDS.35	10 x 3.3
	38	SDS.38	10 x 3.3
	40	SDS.40	12 x 3.3
	42	SDS.42	12 x 3.3
	SD	24	SD.24
25		SD.25	8 x 3.3
28		SD.28	8 x 3.3
30		SD.30	8 x 3.3
32		SD.32	10 x 3.3
35		SD.35	10 x 3.3
38		SD.38	10 x 3.3
40		SD.40	12 x 3.3
42		SD.42	12 x 3.3
SK		24	SK.24
	25	SK.25	8 x 3.3
	28	SK.28	8 x 3.3
	30	SK.30	8 x 3.3
	32	SK.32	10 x 3.3
	35	SK.35	10 x 3.3
	38	SK.38	10 x 3.3
	40	SK.40	12 x 3.3
	42	SK.42	12 x 3.3
	48	SK.48	14 x 3.8
	50	SK.50	14 x 3.8
	55	SK.55	16 x 4.3
SF	28	SF.28	8 x 3.3
	30	SF.30	8 x 3.3
	32	SF.32	10 x 3.3

Type	Bore	Part #	Keyway
SF	35	SF.35	10 x 3.3
	38	SF.38	10 x 3.3
	40	SF.40	12 x 3.3
	42	SF.42	12 x 3.3
	48	SF.48	14 x 3.8
	50	SF.50	14 x 3.8
	55	SF.55	16 x 4.3
	60	SF.60	18 x 4.4
E	35	E.35	10 x 3.3
	38	E.38	10 x 3.3
	40	E.40	12 x 3.3
	42	E.42	12 x 3.3
	48	E.48	14 x 3.8
	50	E.50	14 x 3.8
	55	E.55	16 x 4.3
	60	E.60	18 x 4.4
	65	E.65	18 x 4.4
	70	E.70	20 x 4.9
F	48	F.48	14 x 3.8
	50	F.50	14 x 3.8
	55	F.55	16 x 4.3
	60	F.60	18 x 4.4
	65	F.65	18 x 4.4
	70	F.70	20 x 4.9
	75	F.75	20 x 4.9
	90	F.90	22 x 5.4
J	50	J.50	14 x 3.8
	55	J.55	16 x 4.3
	60	J.60	18 x 4.4
	65	J.65	18 x 4.4
	70	J.70	20 x 4.9
	75	J.75	20 x 4.9
	80	J.80	22 x 5.4
	85	J.85	22 x 5.4
	90	J.90	25 x 5.4
	95	J.95	25 x 5.4
	100	J.100	28 x 6.4

